

THE MASTER SNG 2019



| | | | | | |
|-------------------------|------------|-------------------------|------------|-----------------------|------------|
| Oil Pattern Distance: | 40 Feet | Reverse Brush Drop: | 40 Feet | Oil Per Board: | 50 uL |
| Forward Oil Total: | 14.55 mL | Reverse Oil Total: | 7.6 mL | Volume Oil Total: | 22.15 mL |
| Forward Boards Crossed: | 291 Boards | Reverse Boards Crossed: | 152 Boards | Total Boards Crossed: | 443 Boards |

| | Start | Stop | Loads | Speed | Crossed | Start | End | Feet | T.Oil |
|----|-------|------|-------|-------|---------|-------|------|------|-------|
| 1 | 4L | 4R | 2 | 14 | 66 | 0.0 | 1.9 | 1.9 | 3300 |
| 2 | 6L | 6R | 1 | 14 | 29 | 1.9 | 3.8 | 1.9 | 1450 |
| 3 | 7L | 7R | 1 | 14 | 27 | 3.8 | 5.7 | 1.9 | 1350 |
| 4 | 7L | 7R | 1 | 14 | 27 | 5.7 | 7.6 | 1.9 | 1350 |
| 5 | 7L | 7R | 1 | 14 | 27 | 7.6 | 9.5 | 1.9 | 1350 |
| 6 | 9L | 9R | 1 | 14 | 23 | 9.5 | 11.4 | 1.9 | 1150 |
| 7 | 11L | 11R | 2 | 18 | 38 | 11.4 | 16.5 | 5.1 | 1900 |
| 8 | 13L | 13R | 2 | 18 | 30 | 16.5 | 21.6 | 5.1 | 1500 |
| 9 | 14L | 14R | 1 | 18 | 13 | 21.6 | 24.1 | 2.5 | 650 |
| 10 | 15L | 15R | 1 | 18 | 11 | 24.1 | 26.6 | 2.5 | 550 |
| 11 | 2L | 2R | 0 | 18 | 0 | 26.6 | 31.0 | 4.4 | 0 |
| 12 | 2L | 2R | 0 | 26 | 0 | 31.0 | 40.0 | 9.0 | 0 |

Forward Reverse More

| | Start | Stop | Loads | Speed | Crossed | Start | End | Feet | T.Oil |
|---|-------|------|-------|-------|---------|-------|------|-------|-------|
| 1 | 2L | 2R | 0 | 30 | 0 | 40.0 | 22.0 | -18.0 | 0 |
| 2 | 12L | 12R | 1 | 18 | 17 | 22.0 | 19.5 | -2.5 | 850 |
| 3 | 10L | 10R | 1 | 18 | 21 | 19.5 | 17.0 | -2.5 | 1050 |
| 4 | 8L | 8R | 1 | 18 | 25 | 17.0 | 14.5 | -2.5 | 1250 |
| 5 | 7L | 7R | 1 | 18 | 27 | 14.5 | 12.0 | -2.5 | 1350 |
| 6 | 6L | 6R | 1 | 14 | 29 | 12.0 | 10.1 | -1.9 | 1450 |
| 7 | 4L | 4R | 1 | 14 | 33 | 10.1 | 8.2 | -1.9 | 1650 |
| 8 | 2L | 2R | 0 | 14 | 0 | 8.2 | 0.0 | -8.2 | 0 |

Forward Reverse More

Conditioner:
Type In or Select
One

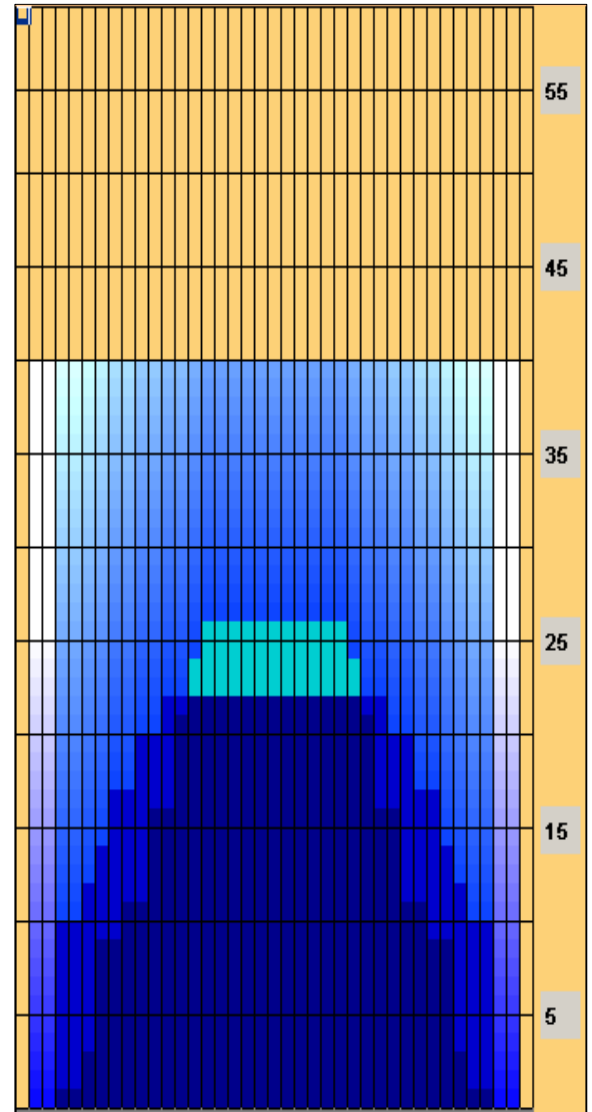
TransferType:
Type In or Select
One

Forward

Reverse

Combined

Buff



| Item | 3L-7L:18L-18R | 8L-12L:18L-18R | 13L-17L:18L-18R | 18L-18R:17R-13R | 18L-18R:12R-8R | 18L-18R:7R-3R |
|------------------|----------------------|---------------------|---------------------|----------------------|---------------------|----------------------|
| Description | Outside Track:Middle | Middle Track:Middle | Inside Track:Middle | Middle: Inside Track | Middle:Middle Track | Middle:Outside Track |
| Track Zone Ratio | 4.75 | 1.53 | 1.03 | 1.03 | 1.53 | 4.75 |

